

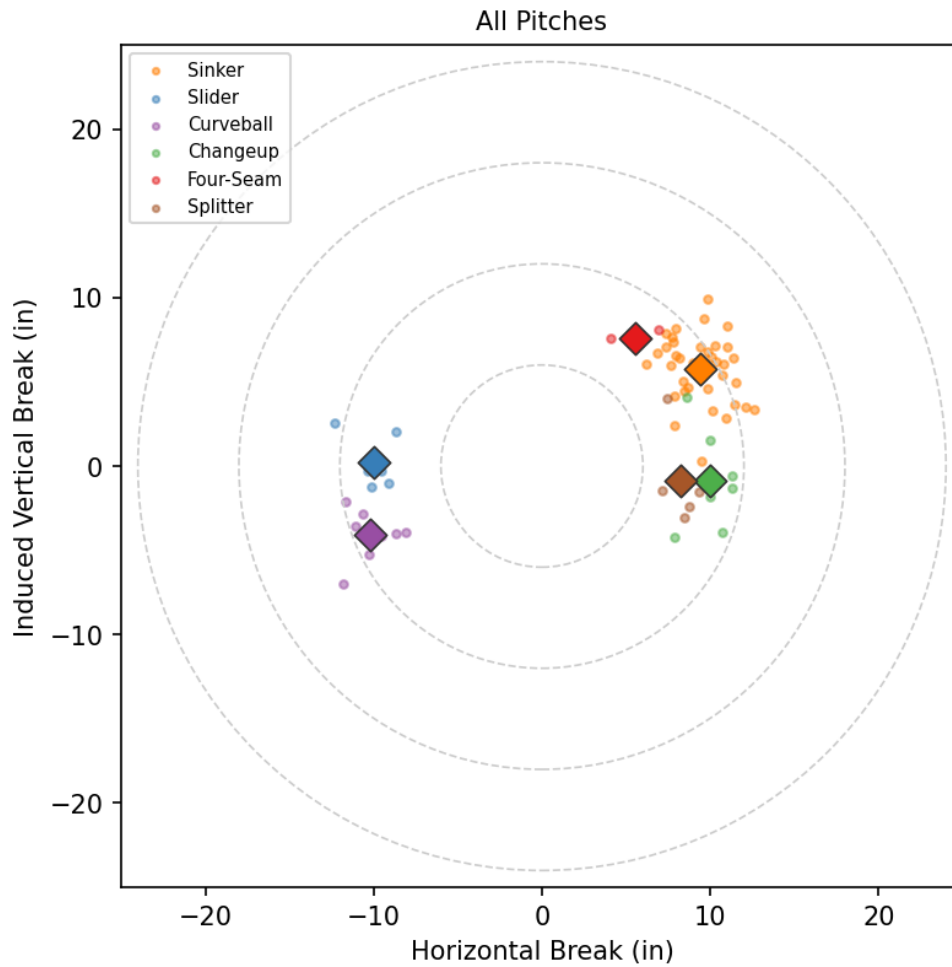
Luis F. Castillo

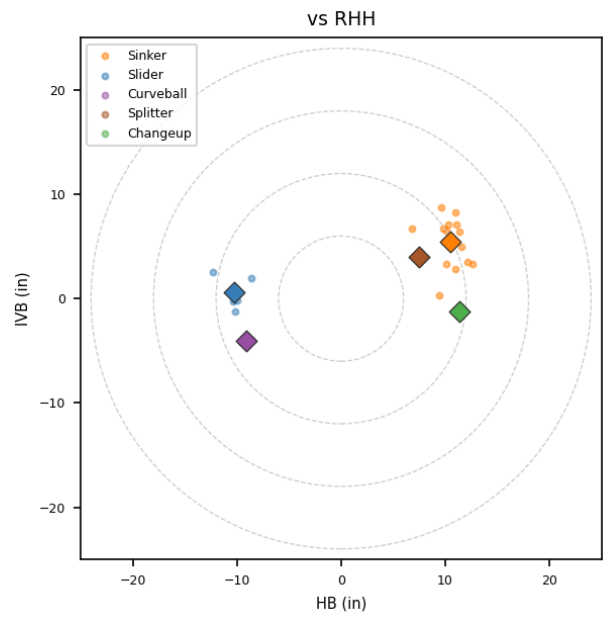
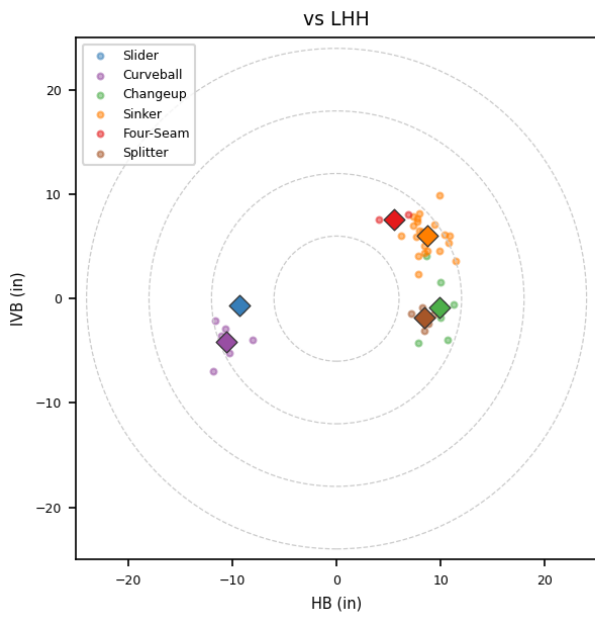
DIA_ROJ | Right | 2026-04-16 to 2026-04-22

Pitching Profile

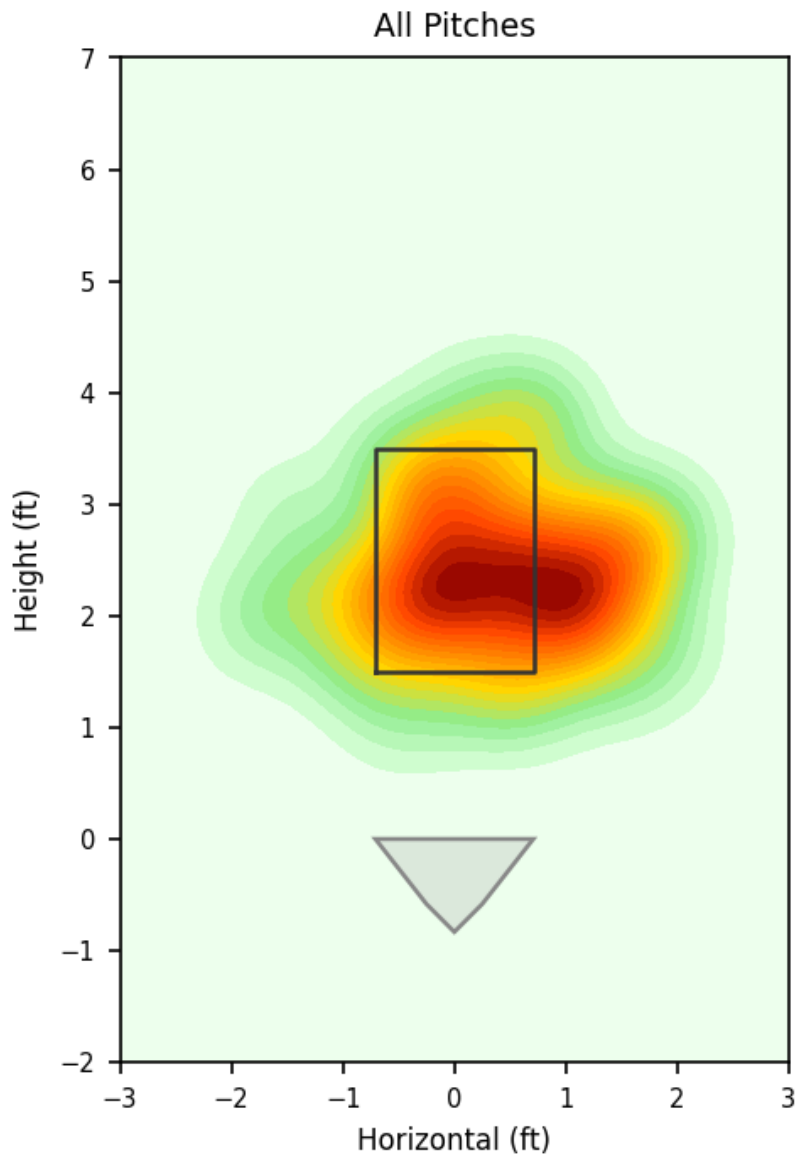
Pitch Type	Count	%	Avg Velo	Max Velo	Avg Spin	IVB	HB	Ext	Whiff%
Sinker	36	52.2%	91.1	92.6	2104.0	5.8	9.4	5.7	12.5%
Changeup	9	13.0%	86.5	88.4	1528.0	-0.9	10.0	5.7	-
Curveball	8	11.6%	79.5	81.0	2367.0	-4.1	-10.2	5.2	-
Slider	7	10.1%	80.6	81.5	2378.0	0.2	-10.0	5.3	50.0%
Splitter	6	8.7%	86.8	87.6	1513.0	-0.9	8.2	5.8	-
Four-Seam	3	4.3%	90.5	91.8	2130.0	7.6	5.5	5.9	-

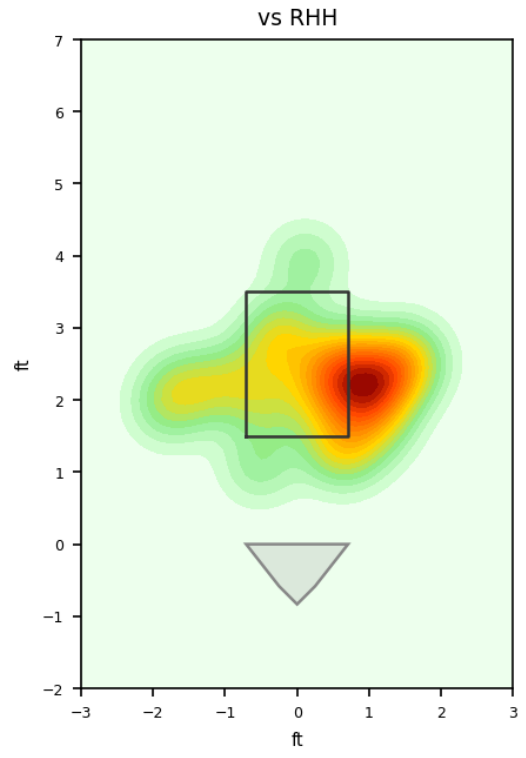
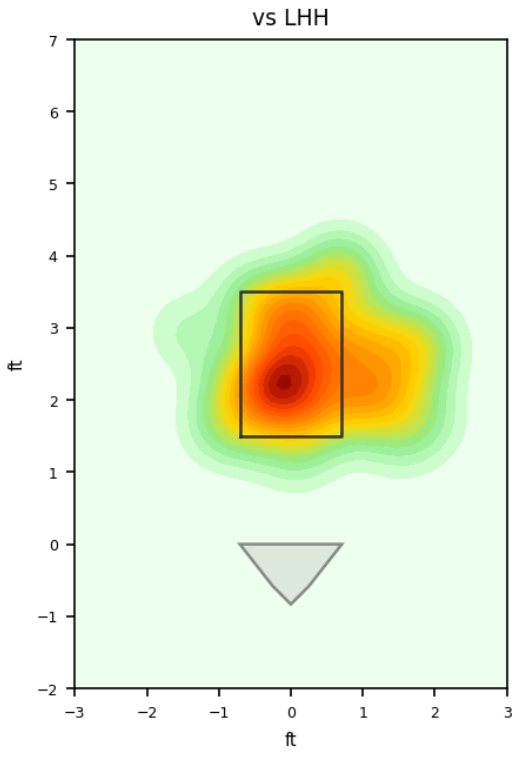
Movement Profile



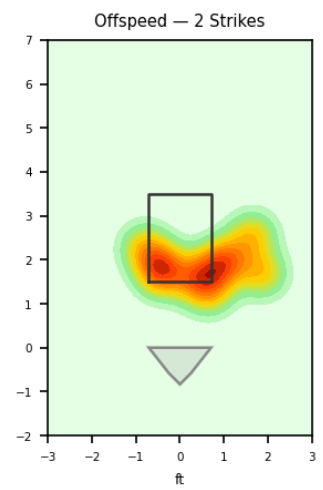
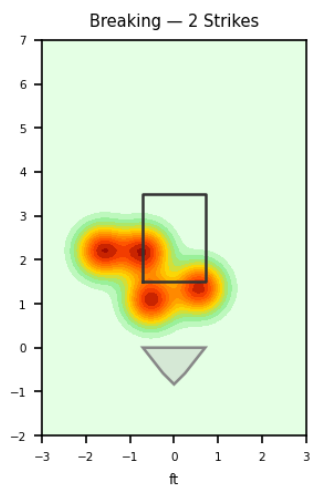
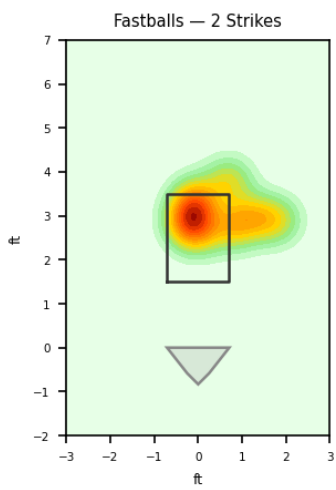
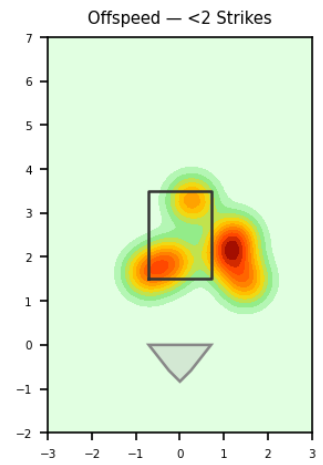
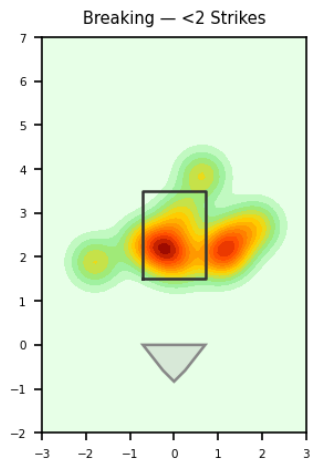
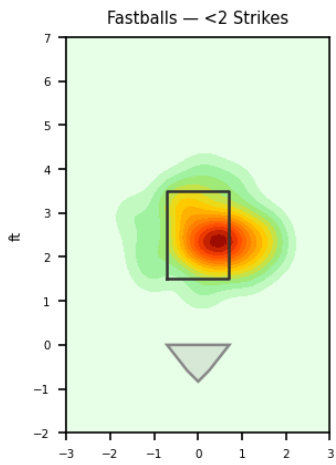


Location Density

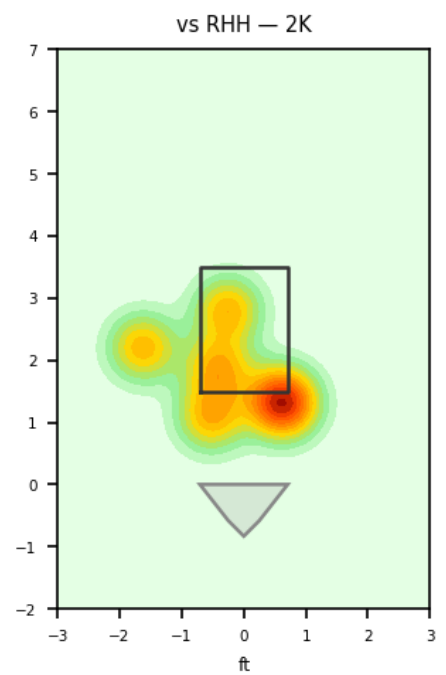
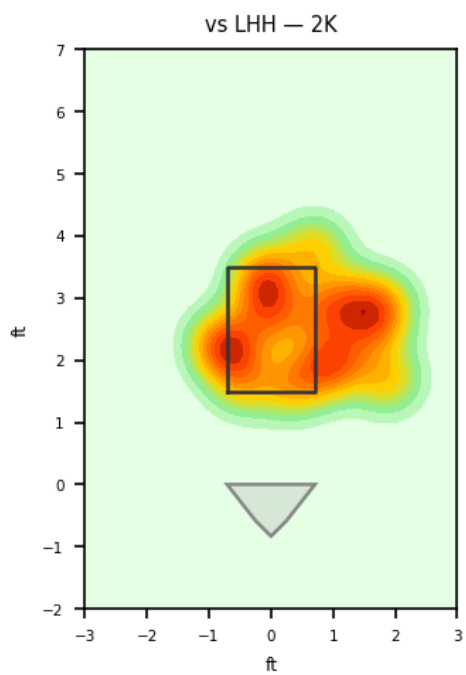
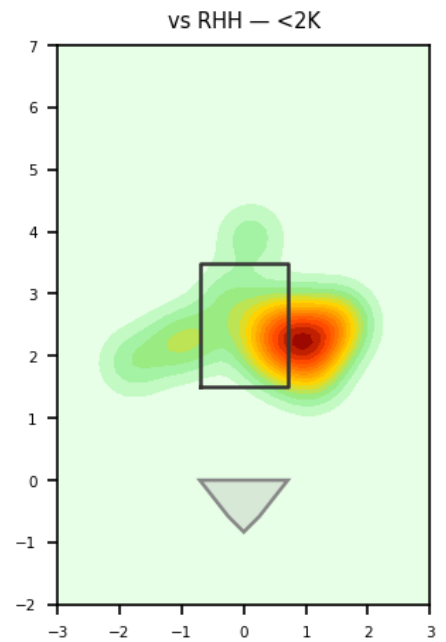
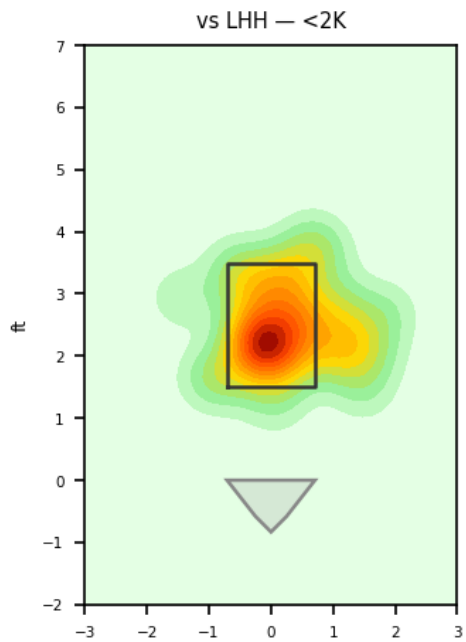




Location by Pitch Type & Count



Location by Handedness & Count



Splits vs LHH

Pitch	Count	%	Velo	Spin	IVB	HB	Whiff%
Sinker	22	47.8%	91.4	2133.0	6.0	8.7	16.7%
Changeup	8	17.4%	86.5	1521.0	-0.8	9.8	-
Curveball	6	13.0%	79.3	2374.0	-4.1	-10.6	-
Splitter	5	10.9%	86.7	1513.0	-1.9	8.4	-
Four-Seam	3	6.5%	90.5	2130.0	7.6	5.5	-
Slider	2	4.3%	80.3	2378.0	-0.7	-9.3	-

Splits vs RHH

Pitch	Count	%	Velo	Spin	IVB	HB	Whiff%
Sinker	14	60.9%	90.6	2058.0	5.4	10.5	-
Slider	5	21.7%	80.7	2378.0	0.6	-10.3	50.0%
Curveball	2	8.7%	80.0	2349.0	-4.1	-9.1	-
Changeup	1	4.3%	87.2	1581.0	-1.3	11.3	-
Splitter	1	4.3%	86.9	1514.0	4.0	7.5	-

Advanced Pitching (TrackMan)

Stat	Value	Stat	Value
Pitches	69	Games	1
Avg Velo	87.7 mph	Max Velo	92.6 mph
Avg Spin	2037.0 rpm	Extension	5.6 ft
IVB	2.7 in	HB	5.0 in
Whiffs	2	BIP	24
Avg Exit Velo	75.4 mph	Dates	2026-04-17 to 2026-04-17

Pitch Mix

Pitch Type	Count	Avg Velo	Max Velo	Avg Spin	IVB	HB	Whiffs	BIP
Sinker	36	91.1	92.6	2104.0	5.8	9.4	1	16
Changeup	9	86.5	88.4	1528.0	-0.9	10.0	0	2
Curveball	8	79.5	81.0	2367.0	-4.1	-10.2	0	3
Slider	7	80.6	81.5	2378.0	0.2	-10.0	1	2
Splitter	6	86.8	87.6	1513.0	-0.9	8.2	0	0
Four-Seam	3	90.5	91.8	2130.0	7.6	5.5	0	1

Traditional Pitching (API)

Stat	Value	Stat	Value
W-L	0-0	ERA	2.7
G/GS	1/1	SV/HD	0/0
IP	3.1	H/ER/HR	5/1/0
K/BB	0/3	K/BB Ratio	0.0
WHIP	2.4	K/9	0.0
BB/9	8.1	BF	15